



CZECH MTB CUP

ROUVY

GRAND PRIX

VIMPERK

9. - 10.5. 2026
sports & recreation
area Vodník



more info



Jihočeský kraj



ROUVY



SKODA



CZECH MTB CUP 2026

UCI C1

9-10.5.2026

VIMPERK

Organizer: Bike klub Vimperk, Zdíkov 330, 384 73 Vimperk

Race director: Jiří Lutovský - jiri@lutovsky.cz, +420 602 422 754

Course director: Jakub Kadlec

Race office secretary: Adéla Vienerová

Chief commissaire: Norbert Schreiber

Chief commissaire: Soňa Jurková

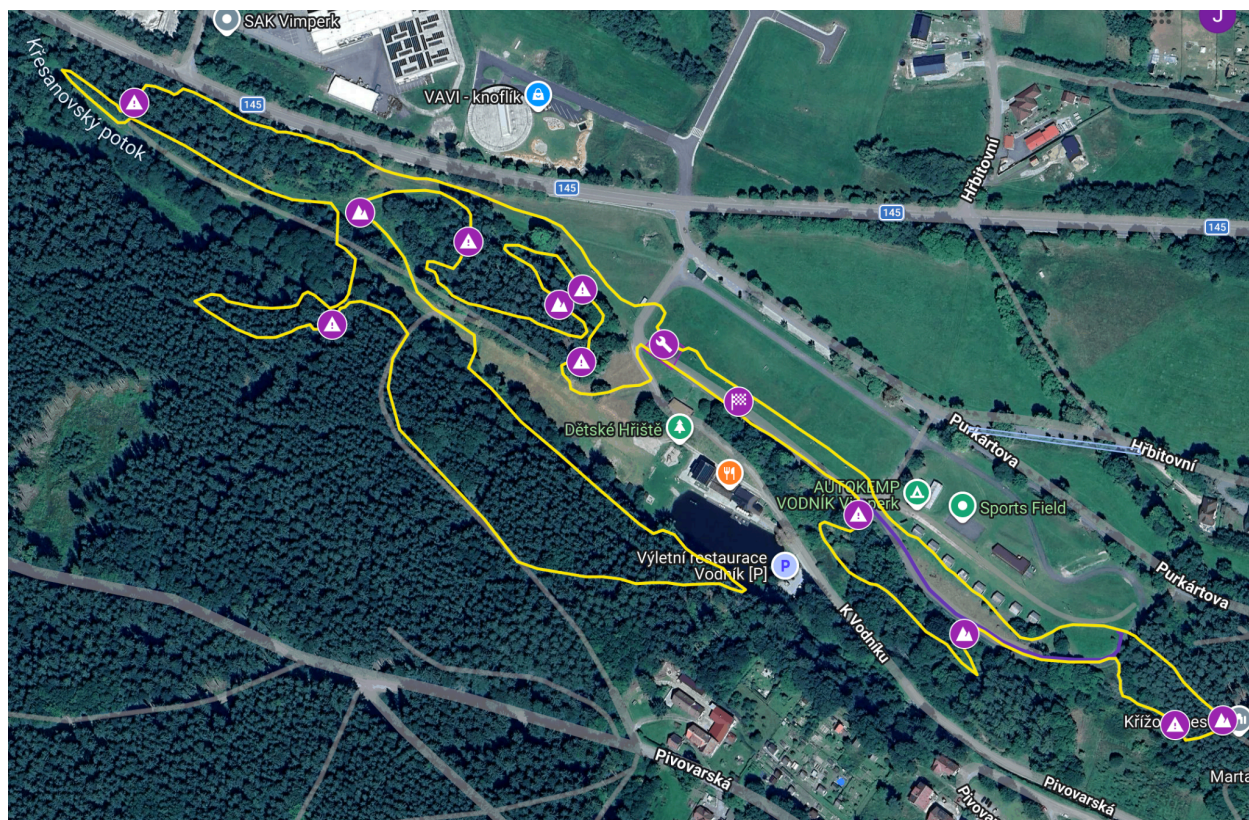
Internet: <https://www.poharmtb.cz/mtb-xco-cup>

Location: VIMPERK, autocamping Vodník, CZE. GPS - 49.0597650N, 13.7618578E

Race office: Vimperk, autocamp Vodník,

COURSE:

Course Lap length 3580m, 118m ascent to the Lap, forest paths, meadows, root paths, stoneborders, singles around the Autocamp Vodník. [ROUVY ČESKÝ POHÁR VIMPERK UCI C1 2026](https://www.poharmtb.cz/mtb-xco-cup)



SCHEDULE :

Friday - 8.5.2026

- 16:00 - 19:00** **Open race Office** - Distribution of Bib number, FZ Passes and Team plates
17:00 - 19:00 Official training for Technical skills sections for - U11 and U13
17:00 - 19:00 Official training for all Saturday's categories and races. Riders are required to have aBib.

Saturday - 9.5.2026

- 08:00 - 09:30** **Race office for Saturday's** - Distribution of Bib number, FZ Passes and Team plates
08:00 - 18:15 **Race office - results service**
08:00 - 09:15 Official training for all Saturday's categories and races. Riders are required to have a Bib or team template.
08:00 - 17:00 The skill section opened for training. Non official training - no service from the organizer.
09:30 U17M, Masters, Experti
11:00 Junior Men
12:30 **Awards ceremony – U17 Men, Junior Men, Masters, Expert**
12:30 - 13:15 Official training for elite Men Elite, Elite Women, Junior women and U17 W. Riders are required to have a Bib or team template.
13:30 Elite women, Junior women, U17 W
15:30 Elite Men
15:00 – 17:00 **Race office for Sunday races registration**
17:15 **Awards ceremony Men Elite, Elite Women, Junior women and U17 W**
17:00 – 18:00 Official training for Sunday races. Riders are required to have a Bib or team template.
Training starts after the finish of the last rider of the Elite men race. Chief commissaire must confirm that course is opened for training

Sunday - 10.5.2026

- 08:00 – 15:00** **Race office - results service**
08:00 - 08:30 **Race office** - Distribution of Bib number, FZ Passes and Team plates
08:30 - 14:00 **Technical skills sections**
08:30 - 09:15 U11 W
09:15 - 10:00 U11 M
10:00 - 11:00 U13 W
11:00 - 12:00 U 13 M
09:00 U7 M and U7 W
09:20 U9 W
09:40 U9 M
10:00 U11 W
10:30 U11 M
11:00 **Awards ceremony U7, U9 and U11**
12:00 U15 W
12:45 U15 M
13:30 U13 W
14:15 U13 M
15:15 **Awards ceremony U13, U15**

REGISTRATION:

Registration available online - <https://www.poharmtb.cz/>

Online registration is open **until Thursday 7.5.2026 12:00.**

Later registration at the Race Office is not possible.

During registration via the Internet, the competitor must pay the Start-fee by online payment by credit card, according to the instructions on the registration page. The transfer to the payment will be made automatically as soon as you register for the race. Without payment, the entry form is not valid and such a competitor will be removed from the starting list. If you are unable to pay (the system does not accept your payment card), write an e-mail to info@bike-klub.cz.

All Team Managers must pick up Bib Number at Race Office at least 60 minutes before start of race category, according to race schedule.

Start Fee :

- U7 M/W, U9 M/W, U11 M/W 300,- CZK
- U13 M/W, U15 M/W 500,- CZK
- U17M/U17W, Expert, Masters 600,- CZK
- Juniors men and women 800,- CZK
- ELITE Men, Women 900,- CZK

CATEGORIES:

According to ČSC 2026 Licensing Rules for Czech MTB XCO CUP 2026:

- U7 Men 2020 and younger - not part of Czech MTB Cup
- U7 Women 2020 and younger - not part of Czech MTB Cup
- U9 Men 2018 – 2019 - not part of Czech MTB Cup
- U9 Women 2018 – 2019 - not part of Czech MTB Cup
- U11 Men 2016 – 2017 - not part of Czech MTB Cup
- U11 Women 2016 – 2017 - not part of Czech MTB Cup
- **U13 Men 2014 – 2015**
- **U13 Women 2014 – 2015**
- **U15 Men 2012 – 2013**
- **U15 Women 2012 – 2013**
- **U17 Men 2010 – 2011**
- **U17 Women 2010 – 2011**
- **Junior men 2008 – 2009**
- **Junior Women 2008 – 2009**
- **Expert 1986 – 2007**
- **Elite Women 2007 and older**
- **Masters 1991 and older**

- **Elite Men** **2007 and older**

TIMEKEEPING:

On-line , provided by SportSoft s.r.o. www.sportsoft.cz

Live timing during race - see www.sportsoft.cz

UCI POINTS & PRIZES:

UCI Points – according to the UCI Rules for C1 Race - category Elite M+W & Juniors M+W
Prize Money (all in CZK)

Elite M / Elite W UCLC1

Rank	1.	2.	3.	4.	5.	6.	7.	8.	9.	10.
Amount (CZK)	11000	9500	7500	5500	4500	3700	2800	2300	2000	1000

Junior M / Junior W UCI C1

Rank	1.	2.	3.	4.	5.	6.	7.	8.	9.	10.
Amount (CZK)	2500	2000	1500	1200	1000	850	750	600	500	400

Competitors will be paid in CZK, payment will take place in the Race office, within one hour of the ceremonial announcement of results. Uncollected prizes are forfeited, failing to attend the ceremony without cause results in penalty-forfeited prizes, including financial prizes. Number of competitors for the awarding ceremony: all categories 3, Men Elite - 5, Women Elite - 5.

Parking

For public

- parking lot in the area [GPS: 49.0596289N, 13.7622089E](https://www.google.com/maps/place/49.0596289N,+13.7622089E) [GPS: 49.0596289N, 13.7622089E](https://www.google.com/maps/place/49.0596289N,+13.7622089E)

Team parking:

- In close proximity to the site - it will be divided into parking zones.
- Basic team stall with a size of 60 m².
- Prices are for the entire race weekend.
 - Team Area - 1500 - CZK
 - Campers - 1500,- CZK
- [Team area registration form](#)

Accommodations:

- **[Hotel - Restaurace Vodník + chatky](#)** (0 km)
 - K Vodníku 614, 385 01 Vimperk
 - phone: +420 776 069 756,
 - e-mail: rezervace@vimperk-vodnik.cz
- **[Hotel Kristian](#)** (11 km)
 - Kubova Huť 26, 385 01 Kubova Huť
 - phone: +420 380 423 099
 - e-mail: info@kristian1000.cz
 - www.kristian1000.cz
- **[Hotel Zlatá Hvězda](#)** (1 km)
 - 1. máje 103, 385 01 Vimperk
 - phone: +420 388 313 400
 - e-mail: info@hotelzlatahvezda.cz
 - www.hotelzlatahvezda.cz
- **[Hotel a restaurace Terasa](#)** (2 km)
 - Pasovská 34, 385 01 Vimperk
 - phone: +420 380 411 212,
 - e-mail: info@hotelterasa.cz
 - www.hotelterasa.cz
- **[Penzion Volyňka](#)** (2 km)
 - Pasovská 114/7, 385 01 Vimperk
 - phone: +420 728 666 609,
 - e-mail: info@recepce@seznam.cz
 - www.penzion-vimperk.cz
- **[Apartmán Na Stráni](#)** (1 km)
 - Na Stráni 517, 385 01 Vimperk
 - phone: +420 605 986 805,
 - e-mail: st.martan@tiscali.cz
 - www.nastrani.eu
- **[Penzion Šumavous](#)** (3 km)
 - U sloupů 11, 385 01 Vimperk
 - phone: +420 602 483 534,
 - e-mail: jirka@sumavous.cz
- **[Apartmány v Pošumaví](#)** (15 km)
 - Vrbice 72, 384 73 Stahy
 - phone: +420 605 810 914,
 - e-mail: info@apartmanyvposumavi.cz
 - www.apartmanyvposumavi.cz
- **[Dobrá chata](#)** (12 km)
 - Zadov 312, 384 73 Stachy
 - phone: +420 776 069 756
 - e-mail: rezervace@dobrachata.cz
 - www.dobrachata.cz
- **[Hotel Churáňov](#)** (14 km)
 - Zadov 13, 384 73 Stachy
 - phone: +420 607 414 444,
 - e-mail: recepce@churanovhotel.cz
 - www.churanovhotel.cz

Rules:

The race is regulated according to the UCI and ČSC rules, rules for [Czech MTB Cup](#) and this schedule. Each Rider and Staff Member participates in this race at his own risk.

Medical assistance:

DSZ Vimperk

e-mail: info@sanitnisluzba.cz

Mountain Rescue Zadov +420 388 428 193,

Nearest Hospital:

Nemocnice Prachatice, a.s.

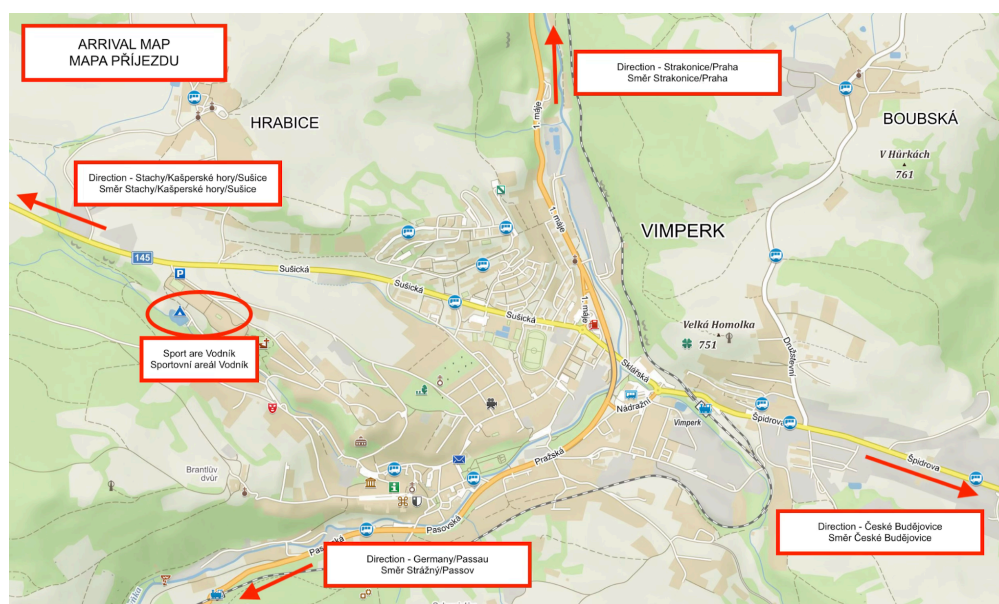
Nebahovská 1015, 383 01 Prachatice, phone: +420 388 600 111

GPS: [49.0071372N, 14.0107900E](#)

ARRIVAL:

Sport area Vodník or Autocamping Vodník, Vimperk.

Near city of Vimperk - 1km – route Nr. 145 direction Stachy/Kašperské Hory/Sušice. See map



PARTNERS

ROUVY

Jihočeský kraj

W

Vimperk.

VODNÍK[®]

HOTEL • RESTAURACE